

ALĒO

S/S 24

SRING SUMMMER 2024



# ALĒO

Handcrafted . Individual . Responsible

# CONTENTS

<b>ABOUT US</b>	<b>04</b>
Brand story	
<b>COLOURWAYS</b>	<b>05</b>
<b>S/S 24</b>	<b>08</b>
Bon Bon	
Carla	
Carla Mini	
Kinsella	
Vega	
Ellora	
Simone	
Hathern	
Colva	
Clovelly	
—	
Laluna mini	<b>20</b>
Laluna	
Darlo mini	
Darlo	
Matchbox mini	
Matchbox	
<b>CONTACT</b>	<b>27</b>



Matchbox Mini

# ABOUT US

The inspiration for Alēo was born from a meeting of minds across the globe. A desire to connect people through artisan craftsmanship, understated luxury and contemporary aesthetics drove the formation of the brand. Guided by our slow fashion approach, we are focused on creating playful modern shapes that are as original as they are timeless.

Born in Sydney, Australia, nurtured in Northern India and now based in Ireland, Alēo is a global brand at its core. Co-founders Tara and Jonathan Jordan wanted to create something both playful and creative, while remaining true to their passion for sustainability and slow-fashion processes.

The brand name Alēo (/ˈaː.leɪ.oː/) represents a small village nestled in the Himalayas, where Tara & Jonathan's son was born. This secluded mountain hamlet inspired the ethos of Alēo; the clean air, snow capped Himalayas and endless sense of wonder made us steadfast in our desire to deliver authentic products for women/individuals/fashion lovers from all walks of life.

Alēo strives to give its customers a fresh, playful and refined aesthetic, rooted in slow sustainable fashion, employing the use of skilled high-quality artisanal craftsmanship. Our collections are our connections; an expansive palette of global influences underpinned by understated luxury and timelessness.

# COLOURWAYS

SPRING SUMMER 24



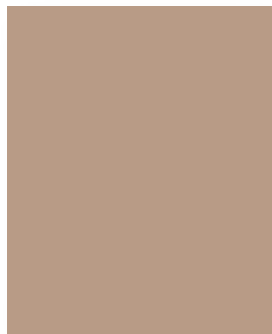
**PANTONE®**  
FHIC  
colour codes



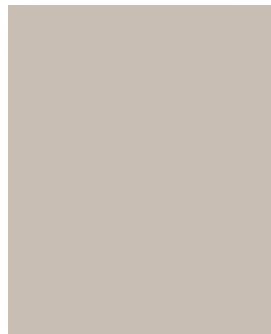
19-4203 TCX  
black



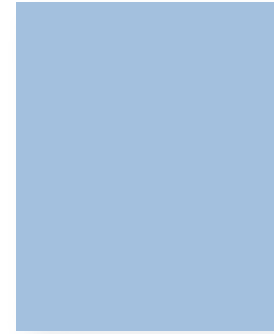
19-1432 TCX  
fondant



16-1318 TP  
taupe



14-4501 TPX  
pumice



14 - 4123 TC  
glacial blue



17 - 1937 TCX  
pink cyclamen



16-1356 TPX  
sweet mandarin



13 - 0941 TCX  
pineapple



19-5421 TCX  
malachite



15 - 6317 TCX  
green fig



389 C  
cyber lime





Bon Bon

# Bon Bon

RRP € 239

RRP £ 209



style no. 340-1201



dimensions	cm	leather & lining	features / details
height	21.5	dollaro/ calf grained leather	tote shaped bag with tonal top handle, detachable crossbody strap and clasp closure
width	32		
depth	12	sand coloured cotton lining	



style no. 340-1204

## Carla

RRP € 189

RRP £ 159



dimensions	cm	leather & lining	features / details
height	27	antique (nappa) leather	crossbody with pinch detail and magnetic clasp closure
width	32		
depth	11	sand coloured cotton lining	

# Carla Mini

RRP € 139

RRP £ 119



style no. 340-1205



dimensions cm

leather & lining

features / details

height 18  
width 25  
depth 7

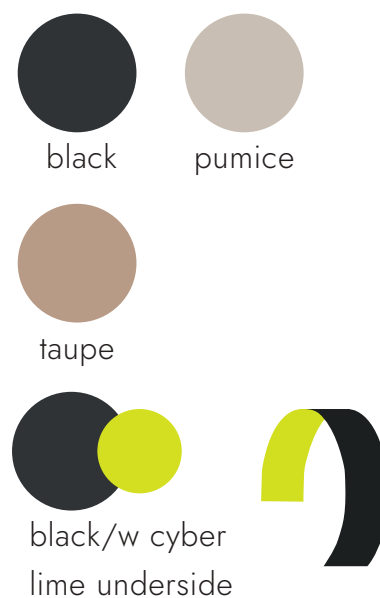
antique (nappa) leather  
sand coloured cotton lining

crossbody with pinch detail  
and magnetic clasp closure

# Kinsella

RRP € 239

RRP £ 209



style no. 340-1207

dimensions cm

leather & lining

features / details

height 35  
width 43  
depth 3

dollaro/ calf grained leather  
sand coloured cotton lining

moon shaped bag with oversized edge piping, detachable straps and magnetic fastening.  
optional two-tone shoulder strap.

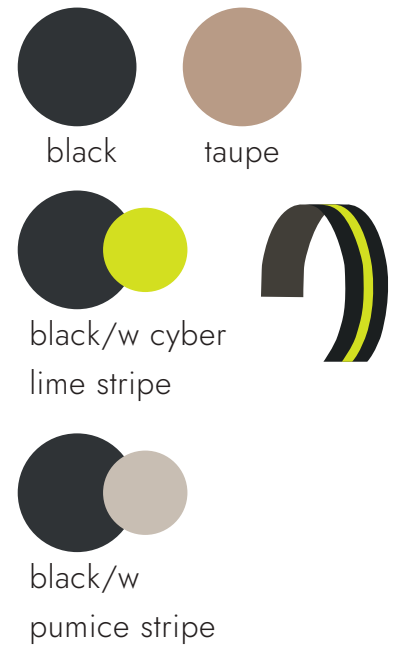
# Vega

RRP € 269

RRP £ 229



style no. 340-1203



dimensions	cm	leather & lining	features / details
height	39	dollaro/ calf grained leather	rectangular tote with oversized canvas strap, latched closure and four outer compartments. optional contrast striped strap.
width	28		
depth	12	tonal suede lining	



Ellora

# Ellora

RRP € 189

RRP £ 159



style no. 340-1202



dimensions cm

leather & lining

features / details

height 26  
width 23  
depth 8

antique (nappa) leather  
sand coloured cotton lining

crossbody with oversized edged piping and zip closure.  
optional contrast piping.





style no. 340-1206

## Simone

RRP € 249

RRP £ 219



dimensions	cm	leather & lining	features / details
height	35	dollaro/ calf grained leather	oversized hobo style, sleek
width	43		rounded finish with deep
depth	11	sand coloured cotton lining	inset zip closure



style no. 340-1209

# Hathern

RRP € 249

RRP £ 219



dimensions	cm	leather & lining	features / details
height	24	antique (nappa) leather	woven shoulder bag with handcrafted finish and detailed rope handles
width	36		
depth	10	sand coloured cotton lining	

# Colva

RRP € 169

RRP £ 149



black



pumice



taupe



pink cyclamen



fondant



mandarin



style no. 340-1210

dimensions

cm

leather & lining

features / details

height

26

antique (nappa) leather

flat, square crossbody with

width

24

black coloured cotton lining

intricate handcrafted weave and

depth

4

magnetic clasp closure

# Clovelly

RRP € 289

RRP £ 249



black



pumice



fondant



style no. 340-1208

dimensions cm

leather & lining

features / details

height 30

width 45

depth 15

antique (nappa) leather

black coloured canvas insert

classic beach shopper with intricate handcrafted weave, double shoulder handle and detachable canvas insert



Laluna Mini

# Laluna Mini

RRP € 219

RRP £ 189



style no. 340-3404



black



pumice



taupe



mandarin



fondant



pineapple



pink cyclamen



green fig

dimensions

cm

leather & lining

features / details

height

25

dollaro/ calf grained leather

moon shaped woven shoulder

width

31

bag with handcrafted finish

depth

10.5

sand coloured cotton lining

and zip closure



style no. 340-3403

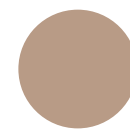
## Laluna

RRP € 289

RRP £ 249



black



taupe



green fig



mandarin



pumice



fondant



pineapple



pink cyclamen

dimensions cm

leather & lining

features / details

height 30

dollaro/ calf grained leather

moon shaped woven shoulder

width 40

bag with handcrafted finish

depth 11

sand coloured cotton lining

and zip closure



style no. 340-3411

## Darlo Mini

RRP € 169

RRP £ 149



dimensions	cm	leather & lining	features / details
height	16	dollaro/ calf grained leather	crossway chevron quilted puffer with accordian style compartments, canvas crossbody strap and zip closure. Optional contrast strap detail.
width	21		
depth	7.5	sand coloured cotton lining	





Darlo

# Darlo

RRP € 219

RRP £ 189



style no. 340-3410



dimensions	cm	leather & lining	features / details
height	20	dollaro/ calf grained leather	crossway chevron quilted puffer with accordian style compartments, canvas crossbody strap and zip closure. optional contrast striped strap.
width	28		
depth	9	sand coloured cotton lining	

# MatchBox Mini

RRP € 129

RRP £ 109



style no. 340-3402

dimensions	cm	leather & lining	features / details
height	12	softy / calf leather	box weave mini crossbody
width	15		with stud details and
depth	8	tonal suede lining	magnetic clasp closure



style no. 340-3401

## MatchBox

RRP € 189

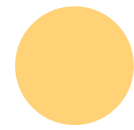
RRP £ 159



black



malachite



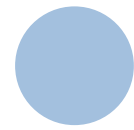
pineapple



pumice



mandarin



glacial blue

dimensions	cm	leather & lining	features / details
height	17	softy / calf leather	box weave crossbody with stud details and magnetic closure
width	26		
depth	9	tonal suede lining	

# CONTACT

Jonathan Jordan

Director

+353 8943 46089

[jonathan@aleoeurope.com](mailto:jonathan@aleoeurope.com)



[@aleoeurope](https://www.instagram.com/aleoeurope)

[aleoeurope.com](http://aleoeurope.com)

[info@aleoeurope.com](mailto:info@aleoeurope.com)

[aleoeurope.com](http://aleoeurope.com)